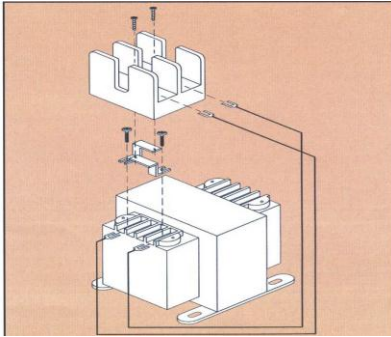


**PRIMARY FUSE KIT # FKTP-1001**  
**SERIES 2 INSTRUCTIONS ON NEXT PAGE**



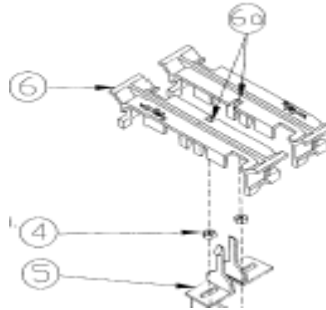
In addition to factory installed primary fusing capability Micron offers a primary fuse kit for ImperviTRAN and ValuTRAN intended for field installation. The primary fuse kit includes a 2-pole Class "CC" fuse block, instructions and all associated mounting hardware. Additionally, this fuse block will fit most competitive units. To order this kit, use catalog number **FKTP-1001**. The primary fuse kit, when installed, will add a maximum of 11/16" to the transformer "A" dimension and 1-15/16" to the "C" dimension. Installed as indicated.

1. Loosen two outer screws on primary side of transformer. On 6 position shell leave 2 spaces open between brackets.
2. Capture mounting brackets and necessary leads under terminal screws and tighten.

**Recommended torque 30 in-lbs.**

3. Affix fuse block to mounting bracket with supplied screws.

**IP-20 COVER KIT # TPTC-2006**

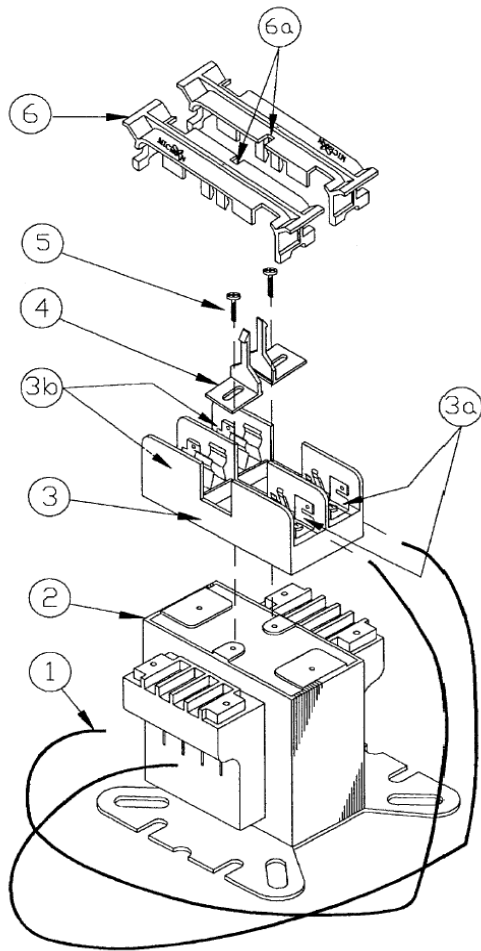


4. Remove two nuts or screws holding primary fuse block to transformer. On FKTP-1001 kits, perform step #5 prior to affixing block to brackets.
5. Install retaining clips in base of fuse block. Secure with nuts or screws as appropriate.
- 6, 6a. Install fuse in cover and snap cover in place. When installed cover cannot be removed without releasing tab from detent (6a). A tip of a pen will suffice.

**GLOBALTRAN ACCESSORIES**

A number of fusing accessories are available for the GlobalTRAN product line. Please contact Micron with your design requirements.

## PRIMARY FUSE KIT # FKTP-1001



## SERIES 2 INSTRUCTIONS

In addition to factory installed primary fusing capability Micron offers a primary fuse kit for units with integral accessory mounting plate (#2) intended for field installation on all catalog standard SERIES 2 units.

The primary fuse kit includes a 2-pole Class "CC" fuse block, instructions and all associated mounting hardware. To order this kit, use catalog number **FKTP-1001**. The primary fuse kit, when installed, will add a maximum of 1-3/8" to the "C" dimension. (as measured from the top of the plate)

### Installation instructions.

1. Connect one end of the 2 primary leads (#1) under the appropriate primary terminal screws. Secure screws to 16 in-lbs <500VA and 30 in-lbs 500VA and larger.
2. Insert locking clips (#4) oriented as shown into the fuse block (#3) pockets. **Use caution in choosing screw length if locking clips are not used.**
3. Attach clips and fuse block to accessory mounting plate (#2) using screws (#5). Recommended torque 16 in-lbs.
4. Insert fuses (not supplied) into fuse block followed by fuse block covers (#6) (IF ORDERED) with lock slots (#6a) matching tip of the clips, as shown. Press down until cover locks. **Refer to primary fuse chart for recommended fuses. Cover cannot be removed without releasing tab from detent (#6a). A tip of a pen will suffice.**
5. Connect the other end of the 2 primary leads (#1) under the screws on each of the 2 poles on the fuse block (#3a) and secure to 20 inch-pounds.
6. Apply primary voltage to the opposite end of the fuse block (#3b).

Additionally the mounting plate (#2) can be utilized to mount other accessories such as DIN rail. **Use caution in choosing screw length.**